

Clickers and Student Response Data:

- **SETUP WEB REGISTRATION**

If you intend to collect data from your student's responses or to just take attendance, You must create a teacher account in the Web Registration Utility Website:

- 1) Go to: <http://instructor.turningtechnologies.com/login.aspx>
- 2) Click **Need an Account**
- 3) Complete the new account form - email address, password
- 4) Click **Create User**
- 5) Click **Continue**

Now you must set up your class/classes

- 1) From the main teacher page, click **Setup Classes**
- 2) Enter the **Class Name**
- 3) Click **Add**

Repeat to add additional classes.

Once you have created an account and added your courses, instruct your students to register their Clickers:

For Students:

- 1) Go to the Web Registration Utility Registration Page: <http://student.turningtechnologies.com>
- 2) Complete step 1 of the form by filling in Device ID, first name, last name:
- 3) Click Next
- 4) Enter the class **Instructor's email address**
Click **Display Classes**
- 5) To be added to their class roster, select the classes from the list in the left column
- 6) Click **Add**
- 7) Click Complete Registration

You can view or download your class roster by logging into the instructor site and choosing Download Class Roster.

- SAVE PARTICIPANT LIST -

Once all students have registered their clickers, open Turning Technologies:

Go to TurningPoint 2008 Tab:

From Tools, choose **Integrations**

For Management System: Choose Turning Technologies Web Registration Utility

Server URL: type <http://instructor.turningtechnologies.com>

Click Next

Login with username:

Full email address

And Password:

Institution – leave blank

Click Next

Choose Import List

Choose Course Name

Click **Finish**

Name the list (i.e. torts 8-16-2011 4:00)

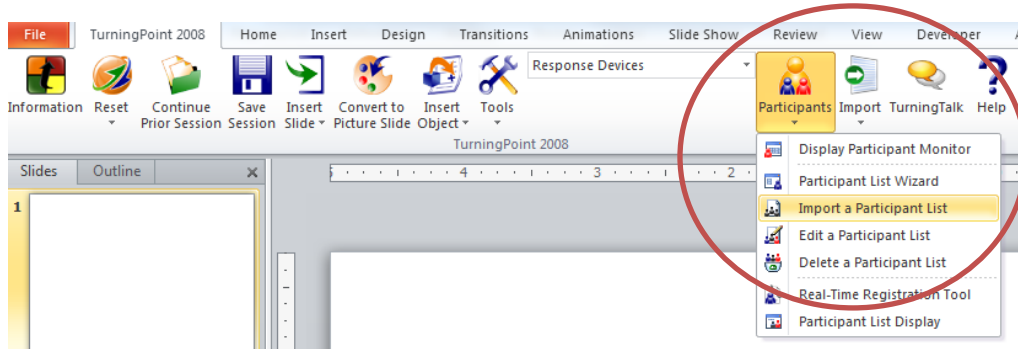
and click **Save**

Save to either a flashdrive or your network drive

- RUN TURNINGPOINT IN THE CLASSROOM

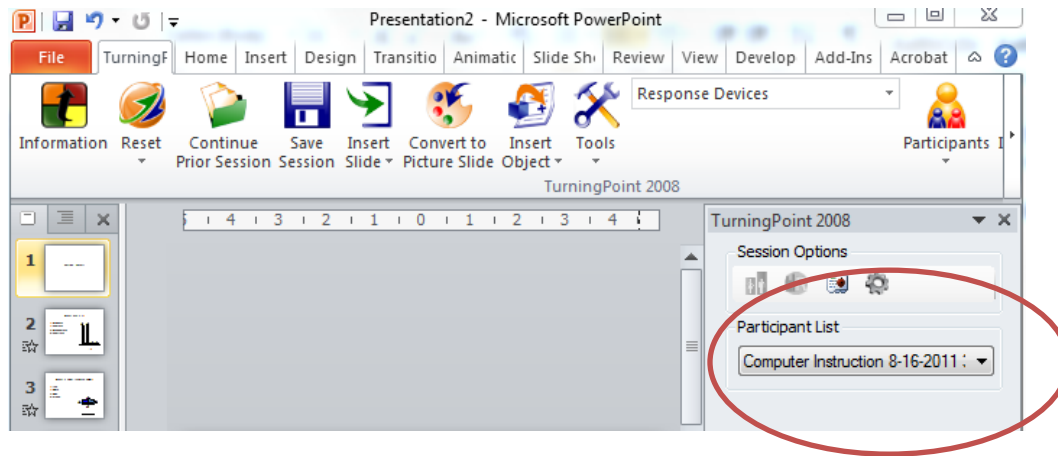
- 1) Click Turningpoint Icon to Open
- 2) Open Presentation
- 3) Import Participants list from flashdrive or network drive:

From Participants, choose Import a Participant List

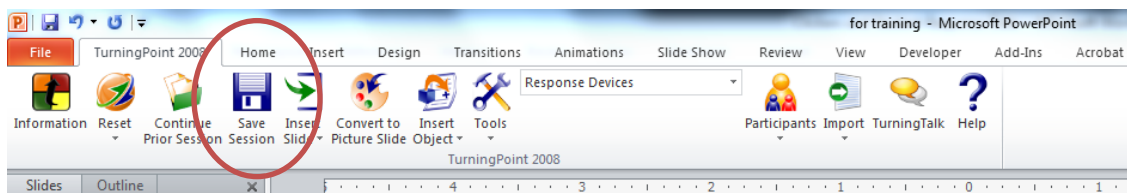


Browse to flashdrive or network drive, select name and click Open

- 4) Select the Participant List in Right Column



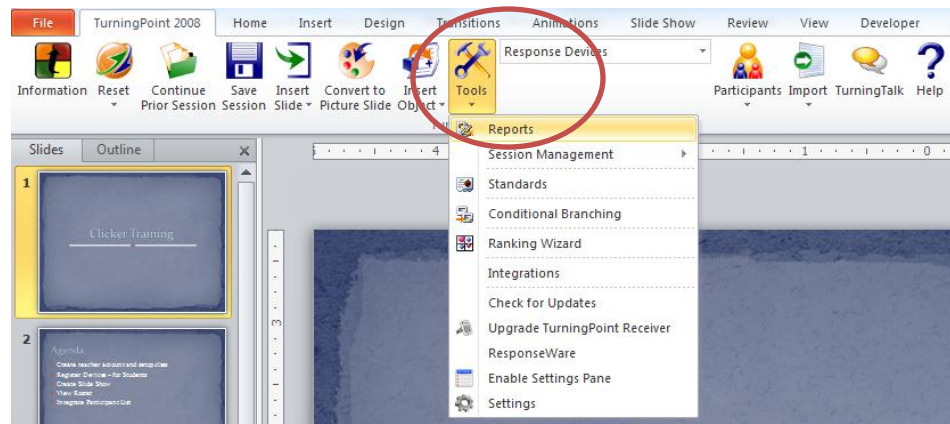
- 5) Reset the Session
- 6) Run the Slide Show
- 7) Save the Session



You can save the session to either a keydrive or your network drive so you can run reports later.

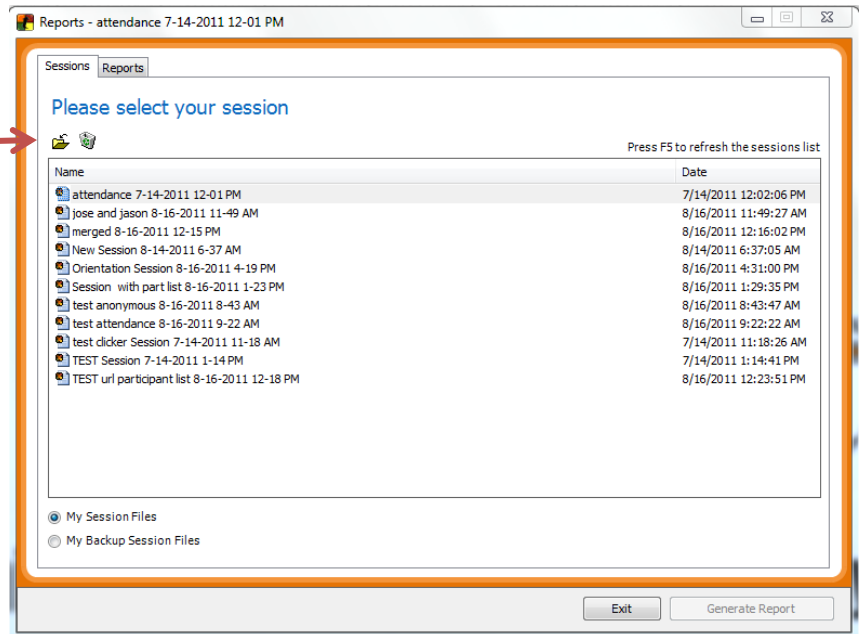
- GENERATING REPORTS

Under TurningPoint 2008 Tab, Click Tools Icon, Choose Reports



Under Sessions Tab,
Click on Session Name
(if saved to flashdrive, click on folder icon and import)

Click on Reports Tab



There are a number of Report Categories.

If you are reporting attendance, under Other Reports, choose Attendance.

Click Generate Report

An Excel spreadsheet will open with results

