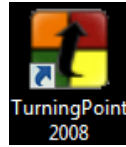


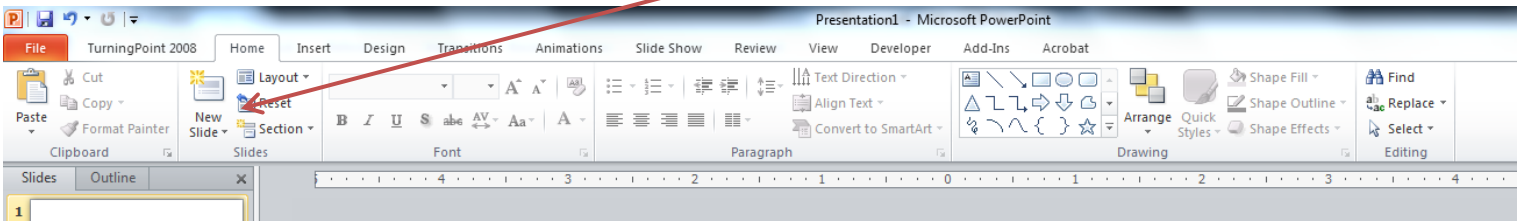
# Quick Guide to Creating a 'Clicker' Presentation

1) Click on Turning Point icon on the desktop:



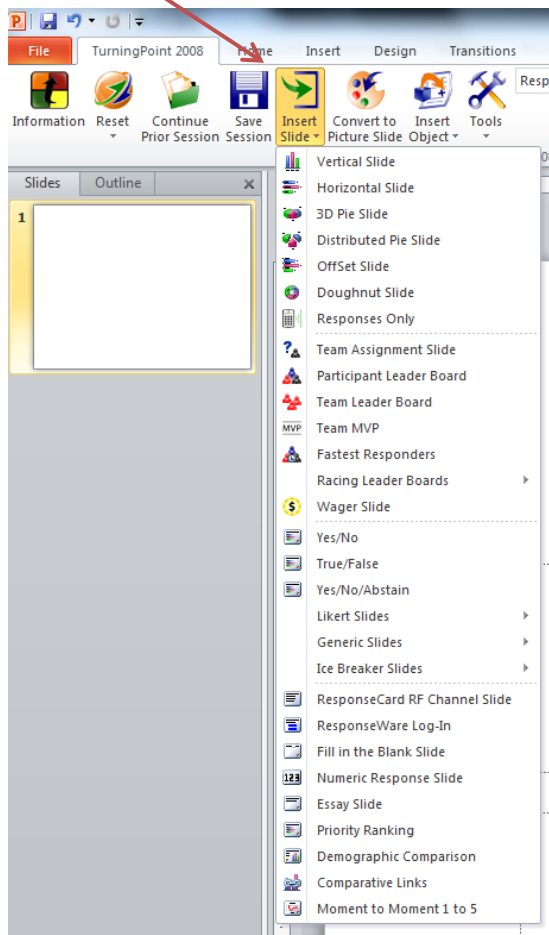
2) Create Slides

a. To Create Regular Powerpoint slides, use the New Slide Button (from Home TAB)



b. To create Interactive slides, Use the Insert Slide Button (from TurningPoint TAB)

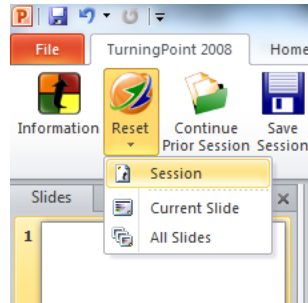
Choose a type of bar graph slide (eg vertical bar, horizontal, etc)



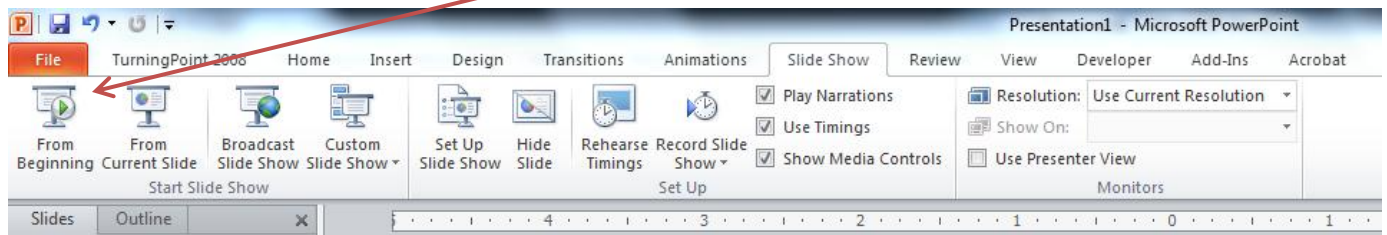
3) Save your presentation

## Showing Presentation

- 1) Open TurningPoint
- 2) Open Presentation
- 3) Go to the TurningPoint TAB and Reset Session (if slides have been used before)



- 4) Go to Slide Show Menu and click From Beginning Button



Advance each slide using your space bar or clicking the mouse

For Interactive Slides, the response toolbar will appear at the top of the screen:



Use this to monitor # of responses and the status of polling (open or closed)

Advance slide (mouse click or space bar) to Close polling



Advancing Slide will display the data results and graph.